

OFFICE

Office Lease
88 Steele Street
Denver, Colorado



Cherry Creek—13,888 RSF for Lease

- Suites available:

Suite 50: 5,743 RSF—upgraded office build out with reception area, eight private offices, conference room, storage area, breakroom and open area (divisible to 2,521 RSF and 3,222 RSF)

Suite 250: 1,894 RSF—two offices, conference room, reception, open area, break/work room

Suite 300: 2,506 RSF—six perimeter offices on glass, conference room, interior work space, (can be combined with Suite 350)

Suite 350: 3,745 RSF—five offices, breakroom, storage and open area — spec suite ready for immediate occupancy (divisible to 1,000 SF)

Suite 300 and 350: Full floor—6,251 RSF

- Excellent access and visibility
- Monument signage available
- Directly across from Cherry Creek Mall; all of Cherry Creek North at your doorstep

Please Contact:

Pete Staab
303.260.4346
pstaab@frederickross.com

Austin Kane
303.260.4396
akane@frederickross.com

www.frederickross.com

Information contained herein, while not guaranteed, is from sources we believe reliable.



FREDERICK ROSS COMPANY
COMMERCIAL REAL ESTATE SERVICES
ONCOR INTERNATIONAL

Frederick Ross Company
717 Seventeenth Street, Suite 2000
Denver, Colorado 80202-3323
Phone: 303.892.1111
Fax: 303.892.6338

INFO

▶ Building Information Building Information Building Info

Address: 88 Steele Street

City/County: Denver/Denver

Space Available: 13,888 RSF

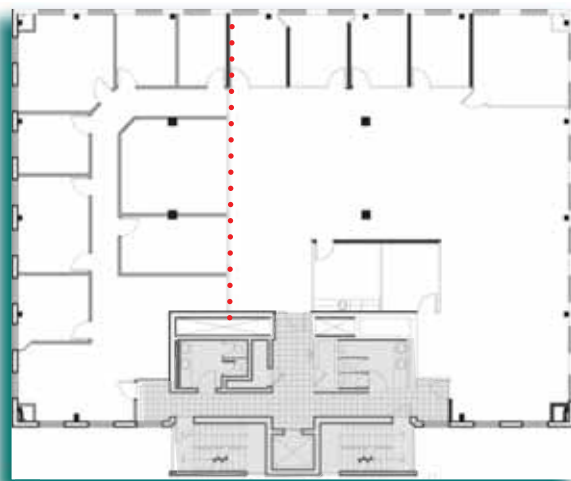
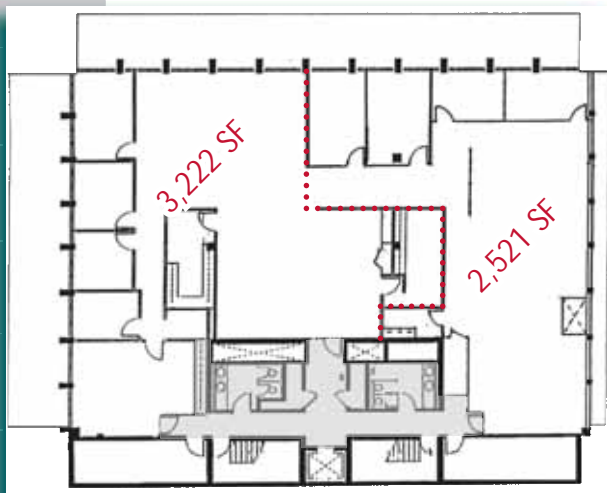
Building Size: 29,695 SF

Tenant Finish: Negotiable

Starting Lease Rate: Contact broker

Parking: 2.7:1,000 SF, covered & surface, reserved

Floor Plans



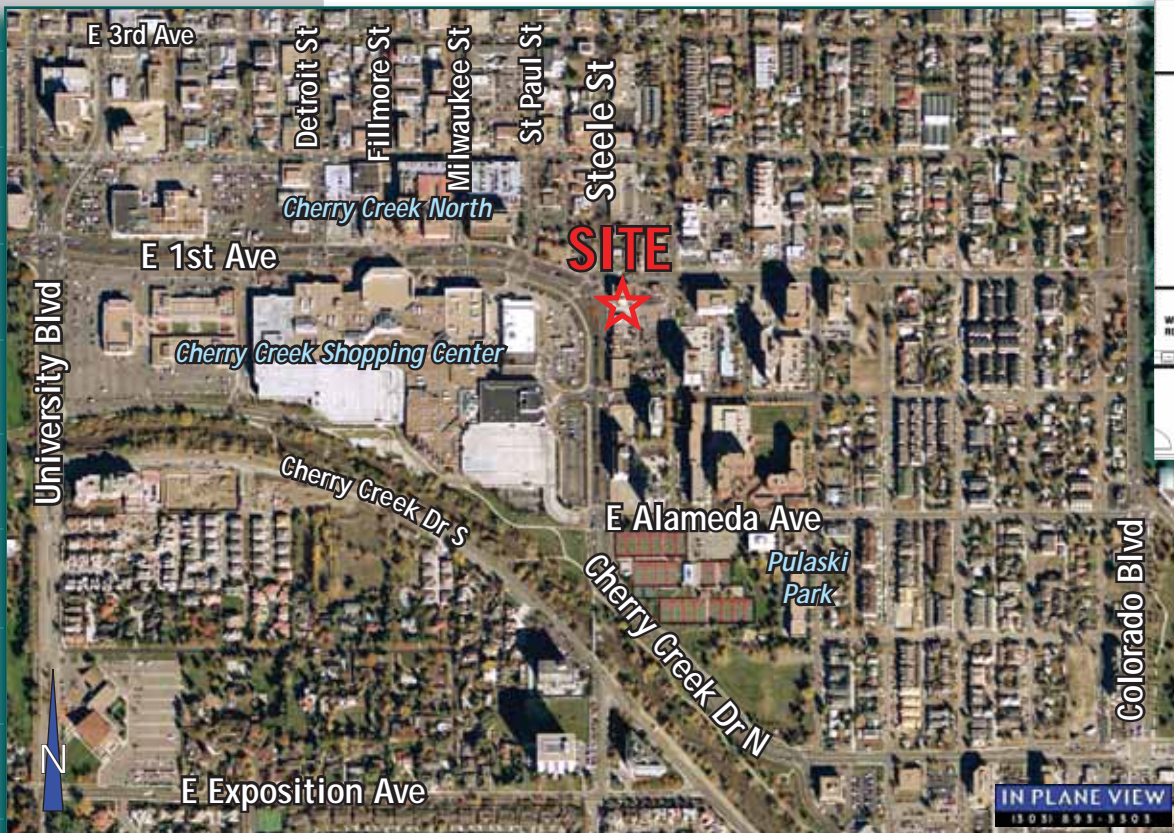
Aerial View

Suite 50
5,743 SF
(Divisible)

Suite 300
2,506 SF

Full Floor
6,251 SF

Suite 350
3,745 SF
*(Divisible to
1,000 RSF)*



Suite 250
1,894 SF

